

The autoclaves are designed with traditional mechanical engineering for customers who are accustomed to and prefer straightforward, nuts-n-bolts autoclaves with time-tested quality and durability that is both economical and practical.

Control panels are designed with simple controls which make these autoclaves also ideal for non-medical applications, such as tattoo parlors and beauty salons.

# SA-252F/SA-300H

**Features:**

- Graduated sterilization timer
- Mechanical pressure control system
- Pressure overload protection
- Overheat protection
- Pressure auto door lock
- Emergency stop button

Model	SA-252F	SA-300H
Chamber capacity (Liter)	24	40
Sterilization Temp (° C)	118 - 134	
Control system	Mechanical engineering	
Sterilization time	0 - 60 minutes	
Dry time	0 - 60 minutes	
Life time	7 years	
Options	Liquid	



SA-252F



SA-300H





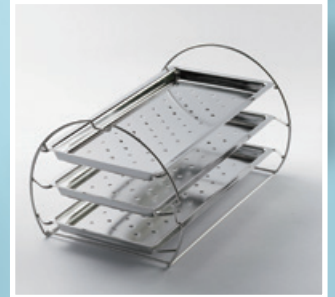
**Double Baskets**  
n/a for smaller upright models



**Single Basket**  
16/50L



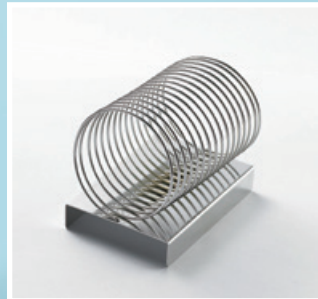
**Water Bottle, Silicone Tube, Clips**  
Stainless Steel Tube also available



**Tray Set**  
10/16/24/40L



**Box**  
10/16/24/40L



**Pouch Holder**  
97(w) x 122 (h) x 148 (d)



**Basket**  
16/24/40L



**Tray Set(MB)**



**Basket**



**Plate Set**



**Optional Trolley**



**Filter**



**Cham-mate**



## Comparison Charts-Tabletop & Vertical

Model No.	Chamber Capacity (L)	Chamber Size Diam x Depth (mm)	Overall Dimensions W x H x D (mm)	Voltage	Current(A) Power(W)	Heater (W)	Dry Heater (W)
<b>Super Deluxe Series</b>							
SA-260MB	24	260 x 450	533 x 442 x 655	230V	12A / 2770W	1800W	870W
SA-300MB	40	300 x 570	620 x 489 x 766	230V	14A / 3226W	2300W	826W
SA-302MB	50	300 x 710	621 x 489 x 906	230V	14A / 3226W	2300W	826W
<b>Super Microm Series</b>							
SA-230MA	16	230 x 410	522 x 410 x 594	230V	9A / 2026W	1400W	526W
SA-260MA	24	260 x 450	533 x 442 x 655	230V	13A / 2770W	1800W	870W
SA-300MA	40	300 x 570	620 x 489 x 766	230V	14A / 3226W	2300W	826W
SA-300VMA	50	300 x 710	600 x 980 x 450	230V	14A / 3000W	2300W	600W
<b>SuperFalcon Series</b>							
SA-230FA	16	230 x 410	522 x 410 x 594	230V	9A / 1926W	1400W	526W
SA-260FA	24	260 x 450	533 x 442 x 655	230V	12A / 2670W	1800W	870W
SA-300VFA	50	300 x 710	600 x 980 x 450	230V	13A / 2900W	2300W	600W
<b>Falcon Series</b>							
SA-252F	24	260 x 450	540 x 450 x 630	230V	9A / 2063W	1800W	263W
SA-300H	40	300 x 570	600 x 470 x 740	230V	12A / 2735W	2300W	435W
SA-300VF	50	300 x 710	600 x 1090 x 450	230V	13A / 3100W	2300W	800W
<b>Poleax Plus Series</b>							
SA-232N	16	230 x 410	501 x 406 x 537	230V	7A / 1400W	1400W	
SA-252N	24	260 x 450	540 x 450 x 630	230V	9A / 1800W	1800W	
SA-300N	40	300 x 570	600 x 470 x 740	230V	12A / 2300W	2300W	
<b>Poleax Series</b>							
SA-230	16	230 x 410	335 x 430 x 510	230V	7A / 1400W	1400W	
SA-232	16	230 x 410	335 x 430 x 510	230V 110V	7A / 1400W 11A / 1200W	1400W 1200W	
SA-232X	16	230 x 410	501 x 406 x 537	230V 110V	7A / 1400W 11A / 1200W	1400W 1200W	
SA-232V	16	230 x 410	382 x 614 x 398	230V	5.3A / 1200W	1200W	
<b>Lab Series</b>							
SA-300VL	50	300 x 710	600 x 1090 x 450	230V	10A / 2300W	2300W	
SA-300VLA	50	300 x 710	600 x 980 x 450	230V	10A / 2300W	2300W	

Model No.	Net Weight (Kg)	Water Fill <sup>1</sup>	Type	Water Tank Capacity (cc)	Water Consumption per cycle (cc)
<b>Super Deluxe Series</b>					
SA-260MB	57	Tank/Piped	Tabletop	4200	1270
SA-300MB	87	Tank/Piped	Tabletop	4200 / 8400	700 / 1500
SA-302MB	92	Tank/Piped	Tabletop	4200 / 8400	700 / 1500
<b>Super Microm Series</b>					
SA-230MA	44	Tank	Tabletop	4200	200-450
SA-260MA	54	Tank	Tabletop	4200	280-350
SA-300MA	77	Tank	Tabletop	8400	350-700
SA-300VMA	84	Piped	Vertical	N/A	1000-1200
<b>SuperFalcon Series</b>					
SA-230FA	43	Tank	Tabletop	4200	200-350
SA-260FA	51	Tank	Tabletop	4200	200-350
SA-300VFA	81	Piped	Vertical	N/A	700-900
<b>Falcon Series</b>					
SA-252F	45	Tank-Man	Tabletop	4200	400-550
SA-300H	66	Tank-Man	Tabletop	8400	400-550
SA-300VF	72	Manual	Vertical	N/A	800-1000
<b>Poleax Plus Series</b>					
SA-232N	30	Tank-Man	Tabletop	4200	600-750
SA-252N	45	Tank-Man	Tabletop	4200	750-1000
SA-300N	66	Tank-Man	Tabletop	8400	1500-1750
<b>Poleax Series</b>					
SA-230	15.5	Manual	Tabletop	N/A	350-400
SA-232	15.5	Manual	Tabletop	N/A	350-400
SA-232X	30	Tank-Man	Tabletop	4200	300-450
SA-232V	23.5	Manual	Vertical	N/A	300-450
<b>Lab Series</b>					
SA-300VL	72	Manual	Vertical	N/A	900-1020
SA-300VLA	77	Piped	Vertical	N/A	900-1020

- "Tank" - Internal Water Tank with auto-chamber-fill, "Piped" - uses local water plumbing with auto-fill.

- "Manual" - must add water manually for each session.

- "Tank-Man" Contains Water Tank but still requires knob to be manually turned on/off to fill chamber.

- Chamber and Door material Stainless Steel #304 (#316 is optional) ; Heater main body material Stainless Steel #316.

- Frequency: 50/60Hz

- Standard Accessory for SA-260MB : tray set.

- Standard Accessories for SA-230/232/232X, SA-252F/300H, SA-232/252/300N, SA-230/260FA, SA-230/260/300MA: Heater Cover / Sterilization Box

Optional Accessories are Tray set / Pouch Rack

- Standard Accessorieis for SA-232V: Heater Cover / Sterilization Basket / Exhaust Hose

- Standard Accessorieis for SA-300V Series: Heater Cover / Sterilization Basket\*2 / Exhaust Hose / 2000cc Bottle / Clip

Comparison Charts Tabletop / Vertical

Model No.	Temperature ( °C) Options	Temperature Indicator	Pressure Indicator	Progress Indicator <sup>4</sup>	Power Indicator	Pressure Auto Lock	Door Closed Indicator	Low Water Indicator	Reset	Program Selector	Prion Preset
<b>Super Deluxe Series</b>											
SA-260MB	121 or 134 105-135	LCD	Gauge/LCD Display	S	S	S	S	S	S	S	S
SA-300MB	121 or 134 105-135	LCD	Gauge/LCD Display	S	S	S	S	S	S	S	S
SA-302MB	121 or 134 105-135	LCD	Gauge/LCD Display	S	S	S	S	S	S	S	S
<b>Super Microm Series</b>											
SA-230MA	121 or 134	LED	Gauge	S	S	S	S	S	S	S	S
SA-260MA	121 or 134	LED	Gauge	S	S	S	S	S	S	S	S
SA-300MA	121 or 134	LED	Gauge	S	S	S	S	S	S	S	S
SA-300VMA	121 or 134	LED	Gauge	S	S	S	S	S	S	S	S
<b>SuperFalcon Series</b>											
SA-230FA	121 or 134		Gauge	S	S	S	S	S	S	S	
SA-260FA	121 or 134		Gauge	S	S	S	S	S	S	S	
SA-300VFA	121 or 134		Gauge	S	S	S	S	S	S	S	
<b>Falcon Series</b>											
SA-252F	118 - 134	Gauge	Gauge <sup>1</sup>	S	S	S					
SA-300H	118 - 134	Gauge	Gauge <sup>1</sup>	S	S	S					
SA-300VF	118 - 134	Gauge	Gauge <sup>1</sup>	S	S						
<b>Poleax Plus Series</b>											
SA-232N	121 or 134	LCD	Gauge <sup>1</sup>	S	S	S	S			S	
SA-252N	121 or 134	LCD	Gauge <sup>1</sup>	S	S	S	S			S	
SA-300N	121 or 134	LCD	Gauge <sup>1</sup>	S	S	S	S			S	
<b>Poleax Series</b>											
SA-230	126	Gauge	Gauge <sup>1</sup>		S						
SA-232	126	Gauge	Gauge <sup>1</sup>	S	S					S	
SA-232X	118 - 134	Gauge	Gauge <sup>1</sup>	S	S	0				S	
SA-232V	118 - 134	Gauge	Gauge <sup>1</sup>	S	S					S	
<b>Lab Series</b>											
SA-300VL	105 - 136	LED	Gauge	S	S						
SA-300VLA	105 - 136	LED	Gauge	S	S	S					

S - Standard 0 - Optional  
 1 - Pressure & Temperature indicated on same gauge  
 4 - Progress bar or Progress lights  
 5 - Excessive Temperature / Pressure Alarm